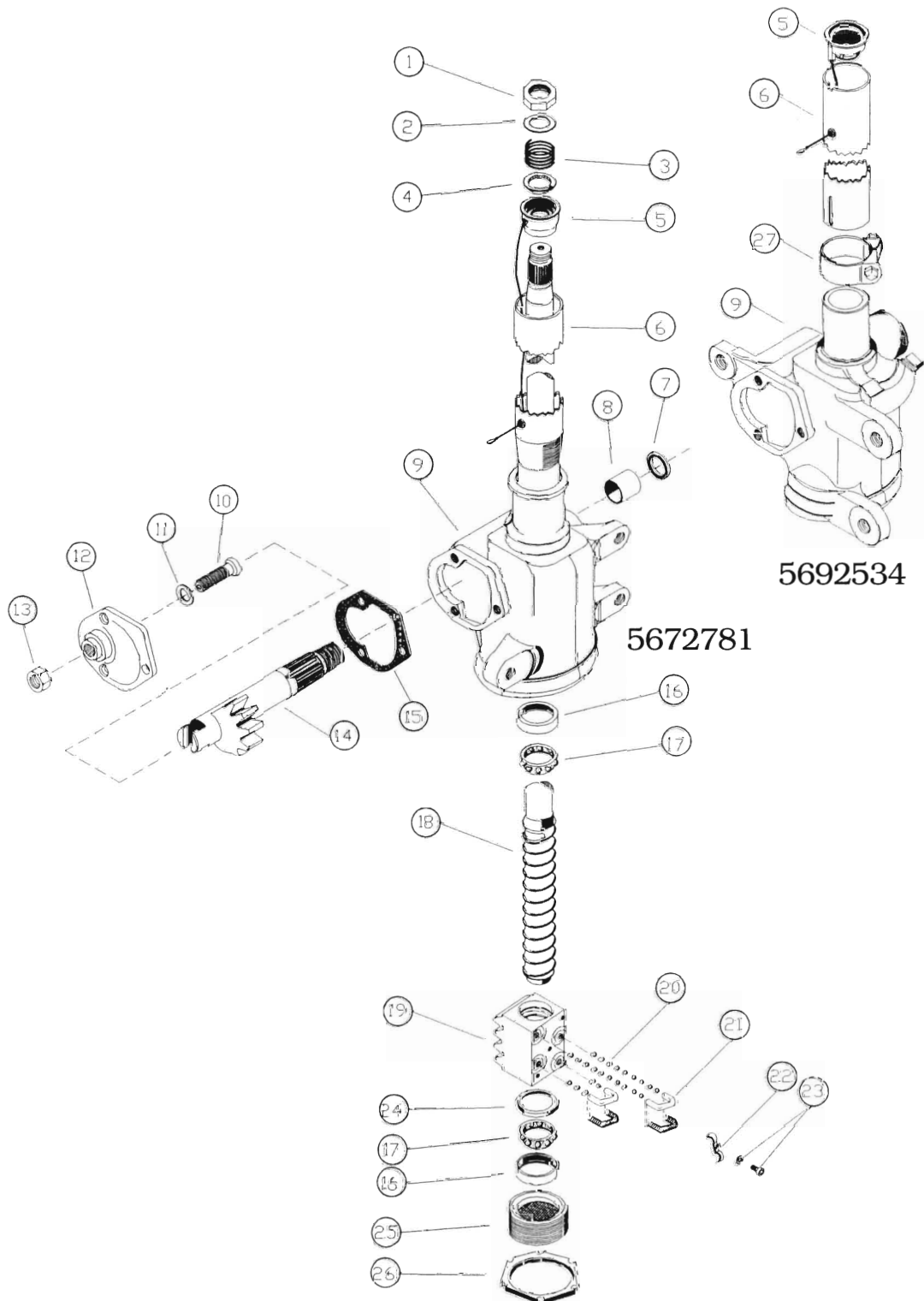


SAGINAW 525 SERIES-INTEGRAL COLUMN



RK 560
SAGINAW 525 SERIES
 FOR INTEGRAL COLUMN APPLICATIONS WITH 1-3/4" TUBE O.D.

INCLUDES ALL PARTS SHOWN IN BOLD TYPE

Key No.	Stock P/N	Part Name	Qty	Key No.	Stock P/N	Part Name	Qty
1	10108	Nut	1	15	10909	Gasket	1
2	14511	Washer	1	16	10206	Bearing Cup	2
3	*14103	Spring	1	17	10218	Bearing	2
4	*14010	Spring Seat	1	18		Ball Nut/Shaft Assy	1
5	11313	Bearing and Cable	1	19		Ball Nut	1
6		Tube Jacket		20	10203	Ball Bearing	AR
7	10709	Seal	1	21		Ball Guide	4
8	10806	Bushing	1	22		Ball Guide Clamp	1
9		Housing	1	23		Bolt and Washer	AR
10	13802	Adjuster Bolt	1	24	10226	Bearing Retainer	1
11	14213	Shim .069	1	25	13902	Adjuster/End Cover	1
12	13905	Side Cover	1	26	10113	Lock Ring Nut	1
13	10109	Nut	1	27		(Not Used)	
14		Pitman Shaft	1	28		(Not Used)	

***Note:** Spring and spring seat not required when using new style 11313 bearing and cable.

RK 570
SAGINAW 525 SERIES
 FOR INTEGRAL COLUMN APPLICATIONS WITH 1-1/2" TUBE O.D.

INCLUDES ALL PARTS SHOWN IN BOLD TYPE

Key No.	Stock P/N	Part Name	Qty	Key No.	Stock P/N	Part Name	Qty
1	10108	Nut	1	15	10909	Gasket	1
2	14511	Washer	1	16	10206	Bearing Cup	2
3	14103	Spring	1	17	10218	Bearing	2
4	14010	Spring Seat	1	18		Ball Nut/Shaft Assy	1
5	11302	Bearing and Cable	1	19		Ball Nut	1
6		Tube Jacket	1	20	10203	Ball Bearing	AR
7	10709	Seal	1	21		Ball Guide	4
8	10806	Bushing	1	22		Ball Guide Clamp	1
9		Housing	1	23		Bolt and Washer	AR
10	13802	Adjuster Bolt	1	24	10226	Bearing Retainer	1
11	14213	Shim .069	1	25	13902	Adjuster/End Cover	1
12	13905	Side Cover	1	26	10113	Lock Ring Nut	1
13	10109	Nut	1	27	14013	Clamp	1
14		Pitman Shaft	1	28		(Not Used)	