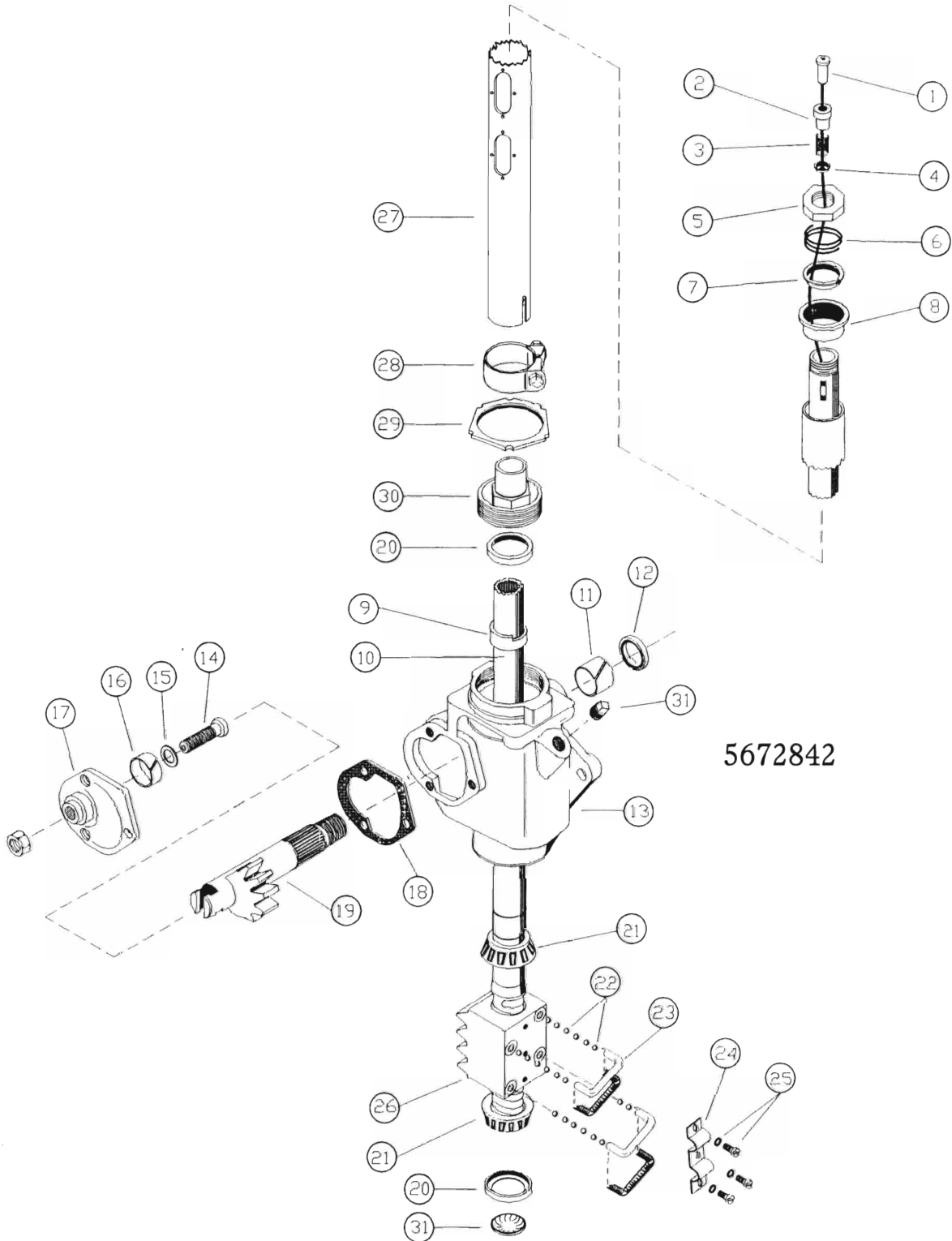


SAGINAW 549 MANUAL SERIES



RK 380
SAGINAW 549 MANUAL SERIES
 FOR APPLICATIONS WITH 7/8" O.D. COLUMN SHAFT

INCLUDES ALL PARTS SHOWN IN **BOLD TYPE**

Key No.	Stock P/N	Part Name	Qty	Key No.	Stock P/N	Part Name	Qty
1	14306	Contact Terminal -----	1	16	10809	Bushing-----	1
2	14307	Ferrule Insulator -----	1	17	13908	Side Cover Assembly-----	1
3	*14305	Contact Spring -----	1	18	10904	Gasket -----	1
4	*14304	Contact Cup -----	1	19		Pitman Shaft -----	1
5	10115	Nut -----	1	20	10215	Bearing Race -----	2
6		(Not Used)-----		21	10214	Bearing -----	2
7		(Not Used)-----		22	10203	Ball Bearing -----	106
8	11305	Tube Jacket Brg -----	1	23		Ball Guide -----	4
9	*14308	Contact -----	1	24		Ball Guide Clamp -----	1
10		Ball Nut/Shaft Assy ----- Includes Key #'s: 1-4, 9, 21 (one only), and 22-26.	1	25	13701	Bolt and Washer -----	1
				26		Ball Nut-----	1
				27		Tube Jacket-----	1
11	10807	Bushing -----	1	28	14012	Clamp-----	1
12	10707	Seal -----	1	29	10114	Lock Ring Nut -----	1
13		Housing -----	1	30	13916	Adjuster -----	1
14	13802	Adjuster Bolt-----	1	31	13915	End Cover-----	1
15	14213	Shim .069 -----	1				

*Note: **Electric Truck Applications** - Use (2) of key # 9 and disregard key #'s 3 and 4.

RK 390
SAGINAW 549 MANUAL SERIES
 FOR APPLICATIONS WITH 1" O.D. COLUMN SHAFT

INCLUDES ALL PARTS SHOWN IN BOLD TYPE

Key No.	Stock P/N	Part Name	Qty	Key No.	Stock P/N	Part Name	Qty
1	14306	Contact Terminal -----	1	16	10809	Bushing-----	1
2	14307	Ferrule Insulator -----	1	17	13908	Side Cover Assembly -----	1
3	*14305	Contact Spring -----	1	18	10904	Gasket -----	1
4	*14304	Contact Cup -----	1	19		Pitman Shaft -----	1
5	10116	Nut -----	1	20	10215	Bearing Race -----	1
6	14104	Spring -----	1	21	10214	Bearing -----	2
7	14011	Spring Seat -----	1	22	10203	Ball Bearing -----	106
8	11303	Tube Jacket Brg -----	1	23		Ball Guide -----	4
9	14301	Contact -----	1	24		Ball Guide Clamp -----	1
10		Ball Nut/Shaft Assy ----- Includes Key #'s: 1-4, 9, 21 (one only), and 22-26.	1	25	13701	Bolt and Washer -----	1
11	10807	Bushing -----	1	26		Ball Nut -----	1
12	10707	Seal -----	1	27		Tube Jacket-----	1
13		Housing -----	1	28	14012	Clamp-----	1
14	13802	Adjuster Bolt-----	1	29	10114	Lock Ring Nut -----	1
15	14213	Shim .069 -----	1	30	13916	Adjuster -----	1
				31	13915	End Cover -----	1

*Note: **Electric Truck Applications** – Use (2) of key # 9 and disregard key #'s 3 and 4.