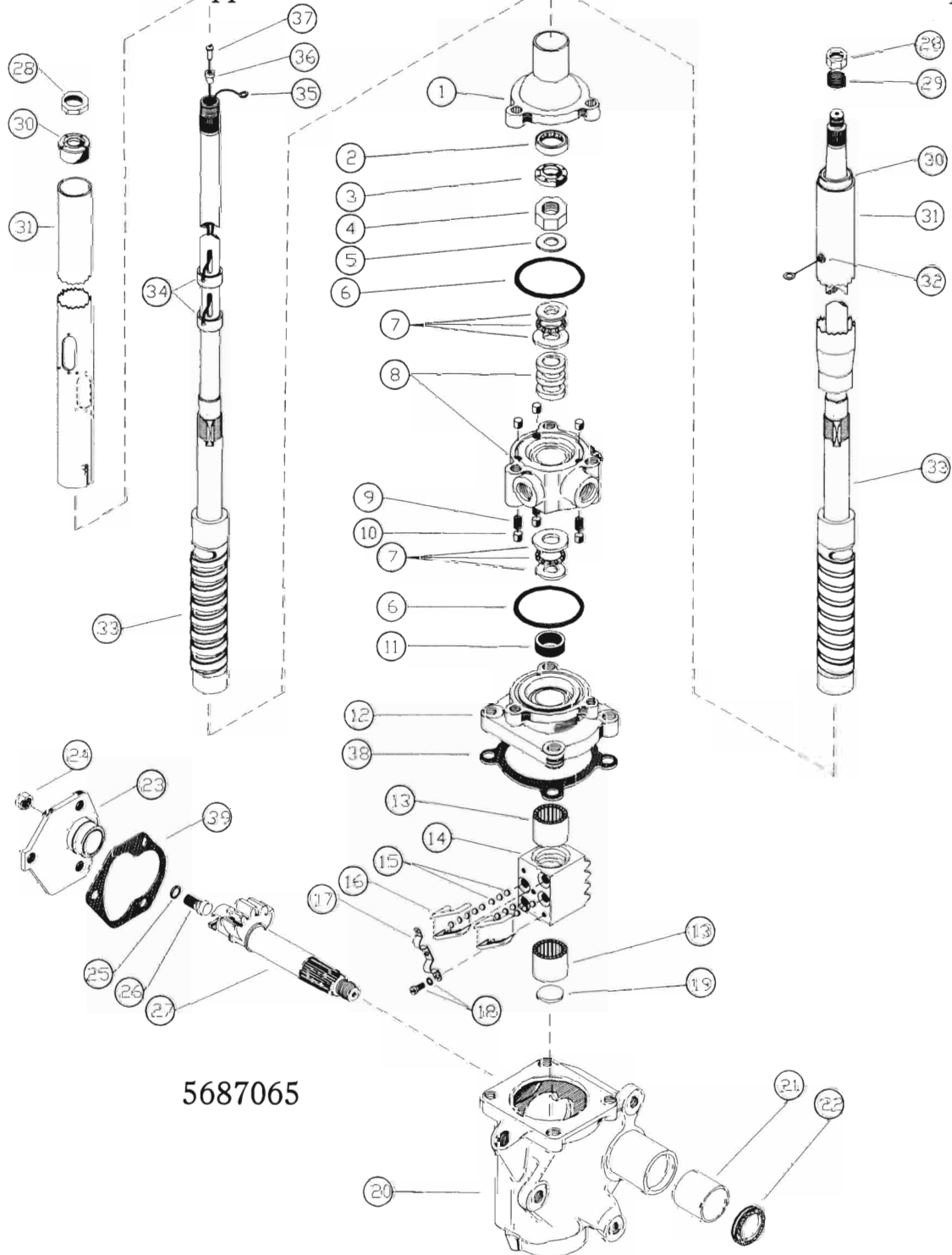


SAGINAW 549 SERIES

EXTERNAL POWER ASSIST

Electric Truck Appl.

Gas Truck Appl.



RK 450 SAGINAW 549 SERIES

External Power Assist for Electric Truck Applications (7/8" Hollow Column Shaft)

INCLUDES ALL PARTS SHOWN IN **BOLD** TYPE

Key No.	Stock P/N	Part Name	Qty	Key No.	Stock P/N	Part Name	Qty
1		Top Cover	1	19	13904	End Cover	1
2		Bearing	1	20		Housing	1
		(Not used in this application)		21	10807	Bushing	1
3	10708	Oil Seal	1	22	10707	Oil Seal	1
4	10103	Locknut	1	23	13908	Side Cover	1
5	14507	Spring Washer	1	24		Nut	1
6	11105	O'Ring	2	25	14213	Shim .069	1
7	10225	Thrust Bearing	2	26	13802	Adjuster Bolt	1
8		Valve Body W/Spool	1	27		Pitman Shaft	1
9		Centering Spring	AR	28		Nut	1
10		Plunger	AR	29	14103	Spring	1
11	10711	Oil Seal	1	30	11305	Tube Jacket Brg	1
		Backup Washer	1	31		Tube Jacket	1
		(Not Shown)		32	10704	Grommet	1
12		Adapter Plate	1	33		Ball Nut/Shaft Assy	1
		(Includes Key No's 11 and 13.)				(Includes Key No.'s 14 thru 18.)	
13	10217	Needle Bearing	2	34	14303	Cable and Contact	2
14		Ball Nut	1	35		Ring Terminal	1
15	10203	Ball Bearing	AR	36	14307	Ferrule Insulator	1
16		Ball Guide	4	37	14306	Contact Terminal	1
17		Ball Guide Clamp	1	38	10902	Gasket	1
18		Bolt and Washer	1	39	10904	Gasket	1

RK 460
SAGINAW 549 SERIES
 External Power Assist for Gas Truck Applications (Solid Column Shaft)

INCLUDES ALL PARTS SHOWN IN BOLD TYPE

Key No.	Stock P/N	Part Name	Qty	Key No.	Stock P/N	Part Name	Qty
1		Top Cover	1	21	10807	Bushing	1
2	10209	Bearing	1	22	10707	Oil Seal	1
3	10706	Oil Seal	1	23	13908	Side Cover	1
4	10103	Locknut	1	24		Nut	1
5	14507	Spring Washer	1	25	14213	Shim .069	1
6	11105	O'Ring	2	26	13802	Adjuster Bolt	1
7	10225	Thrust Bearing	2	27		Pitman Shaft	1
8		Valve Body W/Spool	1	28		Nut	1
9		Centering Spring	AR	29	*14103	Spring	1
10		Plunger	AR	30	11313	Tube Jacket Brg	1
11	10711	Oil Seal	1	31		Tube Jacket	1
12		Adapter Plate (Includes Key No's 11 and 13.)	1	32	10704	Grommet	1
13	10217	Needle Bearing	2	33		Ball Nut/Shaft Assy (Includes Key No.'s 14 thru 18.)	1
14		Ball Nut	1	34		(Not Used)	
15	10203	Ball Bearing	AR	35		(Not Used)	
16		Ball Guide	4	36		(Not Used)	
17		Ball Guide Clamp	1	37		(Not Used)	
18		Bolt and Washer	1	38	10902	Gasket	1
19	13904	End Cover	1	39	10904	Gasket	1
20		Housing	1				

***Note:** Spring not required when using new style 11313 tube jacket bearing.