

CHAR LYNN™ SCU SEAL **KIT SERVICE** **INFORMATION**

- SK115 Universal Seal Kit**
- SK120 Standard Seal Kit**
- SK121 Seal Kit for Early Units**
- SK125 Low Torque Conv. Kit**
- SK127 Low Torque Seal Kit**

For units with the following part # prefixes:
Early Letter/Numbered units (i.e. UB3-12 and similar), 201, 211, 212, 213, 214, 241, 243, 244, 261, 262, 263 and 264.

1. SHAFT SEAL IDENTIFICATION

Early units with removable 4 bolt top cover plate always use the standard quad ring seal. For units with spiral ring retained glands there are two different glands requiring different seals - standard torque and low torque. Note the following picture below to determine if you have a low torque seal requirement. Glands with no grooves cut in top or sides are standard torque.

Note Grooves on Edges or Top of Seal Gland



2. LUBRICATION OF SEALS

Coat all seals and o-rings with a film of clean hydraulic oil or lubricant such as Parker O-Lube. Do not use excessive lubricant on gerotor o-rings.

3. TIMING OF GEROTOR

Inner star element must be installed with correct timing to valve spool. Note in the following picture how the spool cross pin is aligned with valleys in the star for proper orientation.

Align Crosspin With
Any Pair of Valleys
In Rotor



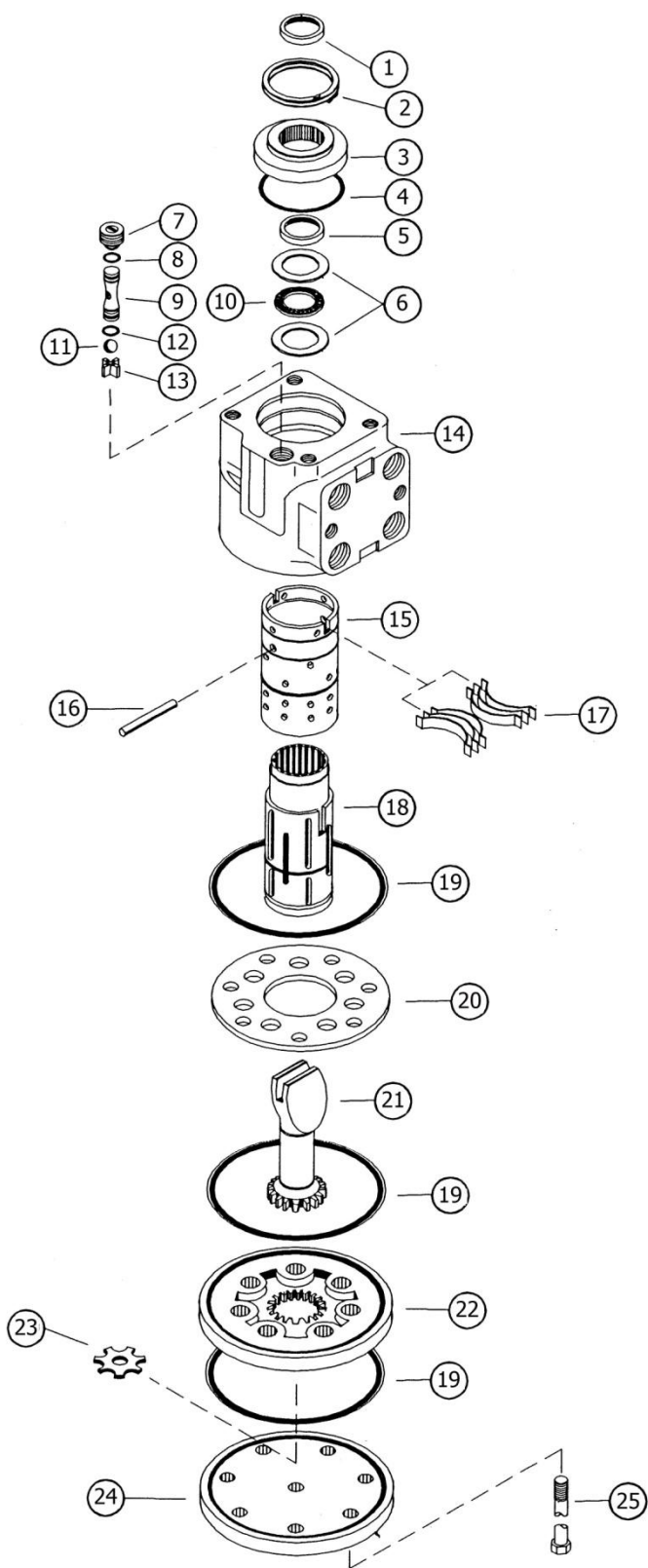
4. BOLT TORQUE

Install bolts dry and using the following chart, tighten to correct torque value for gerotor thickness being used. Cross torque bolts to 1/2 the value shown and then to full amount.

Early Units with 4 bolt removable top cover and no o-rings on bottom cover and gerotor, torque top cover to 250 lb-in and gerotor bolts to 150 lb-in.

Gerotor Thickness	Bolt Torque +/- 10 lb-in	Manual Input Torque Max.
.25"	205 lb-in	30 lb-in
.40" - .79"	235 lb-in	30 lb-in
.86"	250 lb-in	35 lb-in
1.00"	250 lb-in	40 lb-in
1.25"	265 lb-in	45 lb-in
1.59"	265 lb-in	50 lb-in
2.00"	265 lb-in	70 lb-in
2.50"	265 lb-in	80 lb-in
3.18"	280 lb-in	95 lb-in
4.00"	280 lb-in	120 lb-in

Seal Kit Contents Marked by *



- 1* Dust Seal
- 2 Retaining Ring
- 3 Seal Gland
- 4* O-Ring
- 5* Pressure Seal
- 6 Thrust Washers (qty. 2)
- 7 Plug
- 8* O-Ring
- 9 Ball Seat
- 10 Thrust Washer
- 11 Check Ball
- 12* O-Ring
- 13 Spacer
- 14 Valve Body
- 15 Spool Sleeve
- 16 Cross-pin
- 17 Centering Springs (qty. 6)
(2 middle springs flat if low torque)
- 18 Inner Spool
- 19* O-Ring (qty. 3)
- 20 Spacer
- 21 Drive Link
- 22 Gerotor
- 23 Spacer (not used if gerotor
thickness .40" or less)
- 24 End Cover
- 25 Bolts (qty. 7)