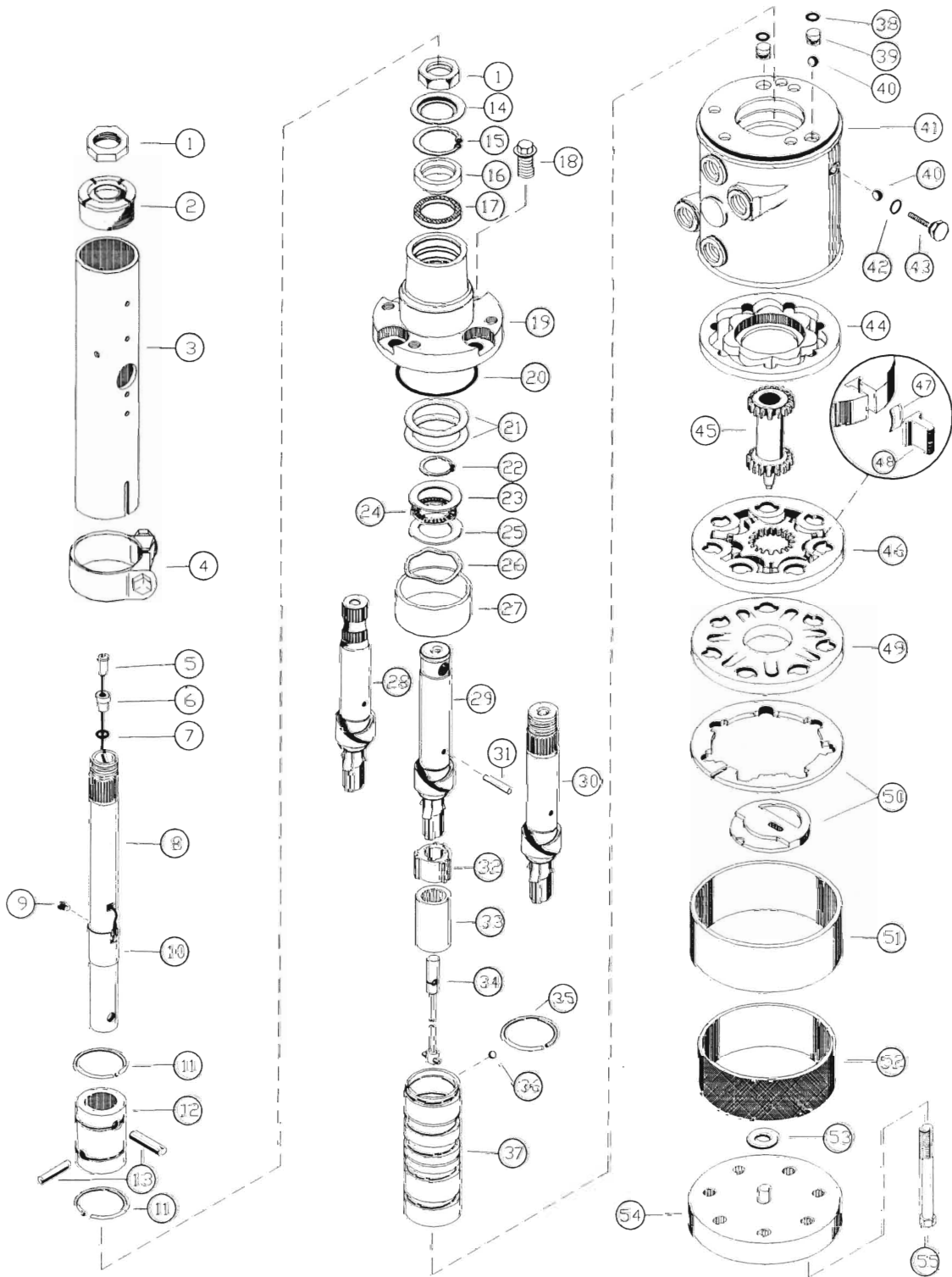


TRW/ROSS HYDRAGUIDE — HGA SERIES



TRW/ROSS HYDRAGUIDE — HGA SERIES

INCLUDES ALL PARTS SHOWN IN **BOLD TYPE**

Use OEM cross reference to determine seal kit # or call with height of seal retainer
(Key No. 51)

Key No.	Stock P/N	Part Name	Qty	Key No.	Stock P/N	Part Name	Qty
1	10115	Nut	1	29	13301	Input Shaft (Pin hole)	1
2	11305	Column Bushing	1	30	13302	Input Shaft (Wheel Mount)	1
3		Tube Jacket	1	31	14030	Needle Roller	1
4	14012	Clamp	1	32	14034	Drive Ring	1
5	14306	Contact Terminal	1	33		Spacer	1
6	14307	Ferrule Insulator	1	34		Torsion Bar	1
7		O'Ring	1	35	14109	Spring	1
8		Column Shaft	1	36		Ball	1
9	13702	Nylon Screw	1	37		Spool	1
10	14302	Contact Ring	1	38		O'Ring	2
11	14111	Retaining Ring	2	39	11116	Plug	AR
12	11201	Pin Coupling	1	40	10231	Check Ball	AR
13	14031	Pin	2	41		Housing	1
14		Dust Seal	1	42		O'Ring	1
15	14404	Snap Ring	1	43	11117	Plug	AR
16		Bushing	1	44	14020	Spacer	1
17		Seal	1	45		Drive Link	1
18		Screw	4	46		Rotor Set	1
19		Upper Cover	1	47		Spring	6
20		O'Ring	1	48		Vane	6
21	14228	Shim Kit	1	49	14023	Manifold	1
22	14403	Retaining Ring	1	50	14022	Commutator Assembly	1
23	14519	Thrust Washer	1	51		Seal Retainer	1
24	10232	Thrust Bearing	1	52		Rotor Seal	1
25	14520	Thrust Washer	1	53	14028	Washer	1
26	14110	Wave Washer	1	54	13917	End Cover	1
27	14029	Spacer	1	55		Bolt	7
28	13303	Input Shaft (U-joint)	1				