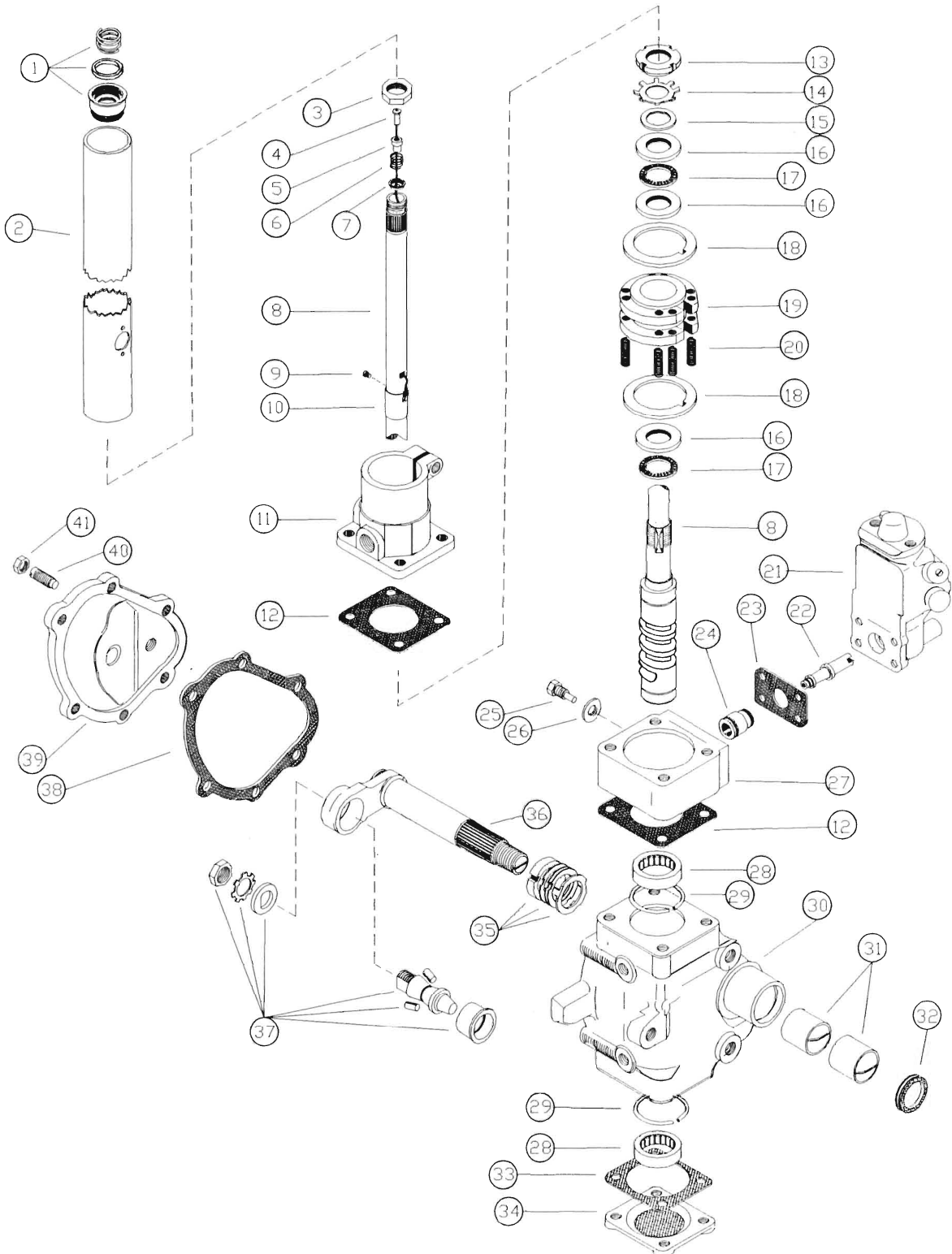


TRW/ROSS HPS 70 SERIES

EXTERNAL VALVE—CAST IRON HOUSING WITH INTEGRAL COLUMN SHOWN



RK 310
TRW/ROSS HPS 70 SERIES
 EXTERNAL VALVE—CAST IRON HOUSING WITH INTEGRAL COLUMN

INCLUDES ALL PARTS SHOWN IN **BOLD TYPE**

| Key No. | Stock P/N | Part Name | Qty | Key No. | Stock P/N | Part Name | Qty |
|---------|--------------|--------------------------------------------------------------------------------|----------|--------------|--------------|----------------------------------|----------|
| 1 | | Jacket Brg.Assembly | 23 | 10915 | | Gasket ----- | 1 |
| | 14104 | Spring ----- | 1 | 10912 | | Adaptr Plate Gasket ----- | 1 |
| | 10703 | Felt Seal ----- | 1 | | | (Not Shown) | |
| | 11303 | Tube Jacket Brg ----- | 1 | 24 | 10802 | Lever Bushing----- | 1 |
| 2 | | Tube Jacket----- | 1 | | | (V14 Valve only) | |
| 3 | 10110 | Nut----- | 1 | 25 | 13801 | Actuator Stop Bolt----- | 1 |
| 4 | 14306 | Contact Terminal----- | 1 | 26 | 14503 | Lockwasher ----- | 1 |
| 5 | 14307 | Ferrule Insulator----- | 1 | 27 | | Actuator Housing----- | 1 |
| 6 | 14305 | Contact Spring----- | 1 | 28 | 10220 | Needle Bearing ----- | 2 |
| 7 | 14304 | Contact Cup----- | 1 | 29 | | Snap Ring----- | 2 |
| 8 | | Cam and Tube----- | 1 | 30 | | Housing----- | 1 |
| 9 | 13702 | Nylon Screw----- | 1 | 31 | 10801 | Bushing ----- | 2 |
| 10 | 14302 | Contact Bushing----- | 1 | 32 | 10705 | Oil Seal ----- | 1 |
| 11 | | Top Cover----- | 1 | 33 | 10914 | Gasket ----- | 1 |
| 12 | 10901 | Gasket ----- | 2 | 34 | | Bottom Cover----- | 1 |
| 13 | 10118 | Locknut----- | 1 | 35 | | Shim Pack----- | 1 |
| 14 | 14504 | Lockwasher ----- | 1 | | | Retainer Washer----- | 1 |
| 15 | | Washer----- | 1 | | | Thrust Washer----- | 1 |
| 16 | | Thrust Washer----- | 1 | | 14217 | Shim .003 thick ----- | 2 |
| 17 | 10223 | Thrust Bearing ----- | 2 | | 14218 | Shim .010 thick ----- | 2 |
| 18 | | Centering Washer----- | 2 | | 14219 | Shim .020 thick ----- | 1 |
| | 14519 | .105 Thick | | 36 | | Levershaft----- | 1 |
| | 14502 | .160 Thick | | 37 | 13001 | Stud Roller Brg ----- | 1 |
| | 14517 | .200 Thick | | 38 | 10911 | Gasket ----- | 1 |
| 19 | 14019 | Actuator----- | 1 | 39 | | Side Cover----- | 1 |
| 20 | 14107 | Centering Spring----- | 4 | 40 | | Adjuster Screw----- | 1 |
| 21 | | Control Valve Serviced separately - See V14 or HP70 Valve parts list. | 1 | 41 | | Locknut----- | 1 |
| 22 | | Actuator Lever----- | 1 | | | | |